

# LIFECYCLE EXTENSION GUIDE



# Contents

## Table of Contents

Important Safety Notice-----	3
1. Exploded Diagram -----	4
2. Wiring connectivity diagram-----	5
3. Mechanical Instructure-----	6
4. Assembly and Disassembly Procedures-----	7
5. Troubleshooting-----	16
6. FRU List-----	19

### Safety Notice

Any person attempting to service this chassis must familiarize with the chassis and be aware of the necessary safety precautions to be used when serving electronic equipment containing high voltage



## Important Safety Notice

### Product Announcement:

This product is certificated to meet RoHS Directive and Lead-Free produced definition. Using approved critical components only is recommended when the situation to replace defective parts. Vender assumes no liability express or implied, arising out of any unauthorized modification of design or replacing non-RoHS parts. Service providers assume all liability.

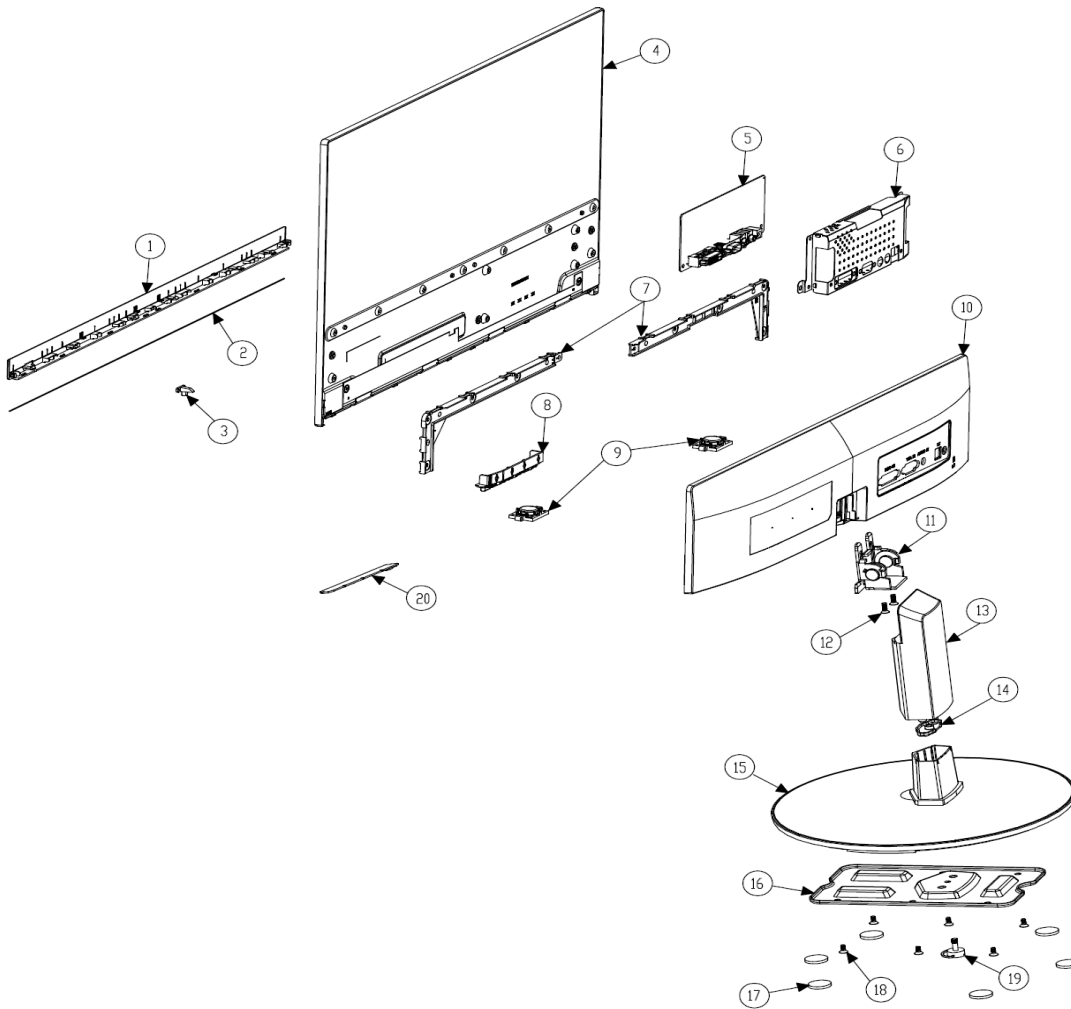
### Qualified Repairability:

Proper service and repair is important to the safe, reliable operation of all series products. The service providers recommended by vender should being aware of notices listed in this service manual in order to minimize the risk of personal injury when perform service procedures. Furthermore, the possible existed improper repairing method may damage equipment or products. It is recommended that service engineers should have repairing knowledge, experience, as well as appropriate product training per new model before performing the service procedures.

### NOTICE:

- ! To avoid electrical shocks, the products should be connect to an authorized power cord, and turn off the master power switch each time before removing the AC power cord.
- ! To prevent the product away from water or exposed in extremely high humidity environment.
- ! To ensure the continued reliability of this product, use only original manufacturer's specified parts.
- ! To ensure following safety repairing behavior, put the replaced part on the components side of PWBA, not solder side.
- ! To ensure using a proper screwdriver, follow the torque and force listed in assembly and disassembly procedures to screw and unscrew screws.
- ! Using Lead-Free solder to well mounted the parts.
- ! The fusion point of Lead-Free solder requested in the degree of 220°C.

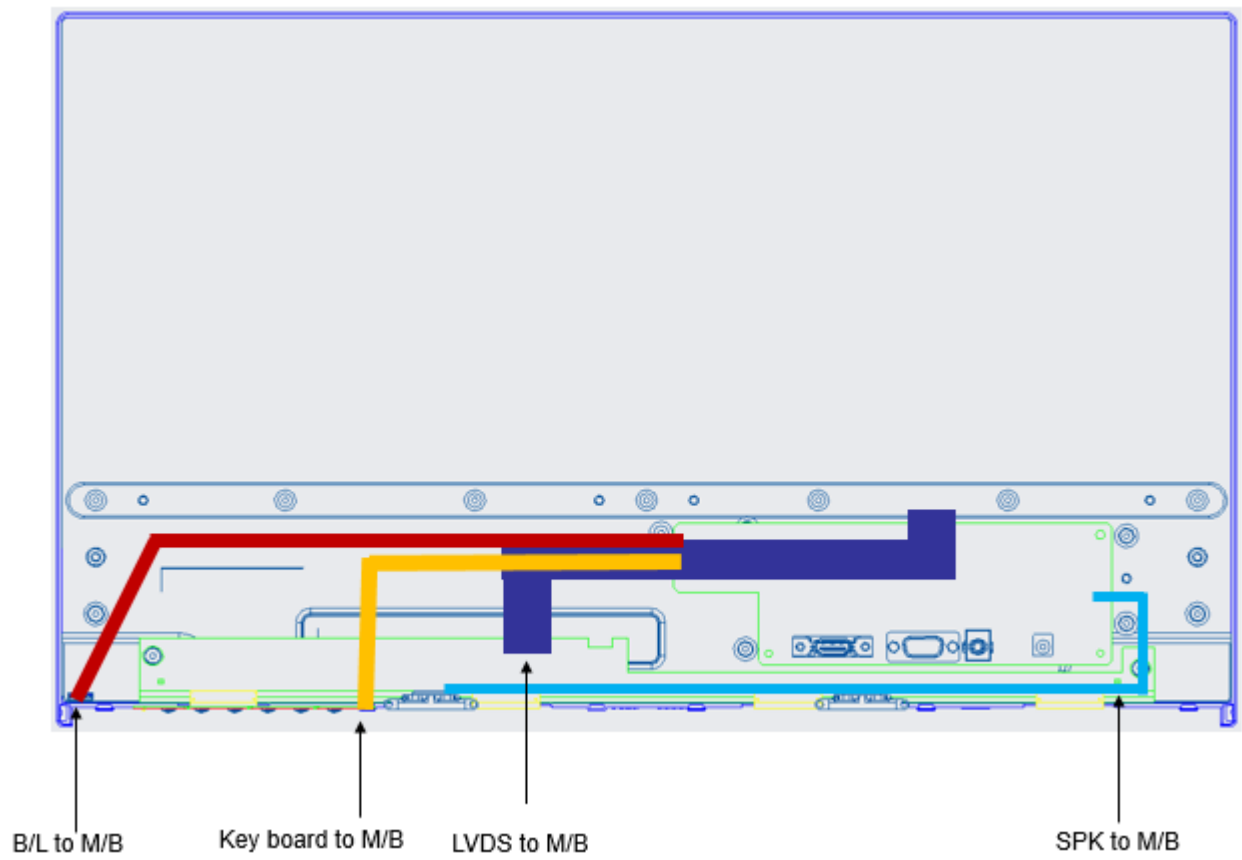
# 1. Exploded Diagram



20.	R352700120156	DISPLAY BD ASS'Y(R27HXR2)	1			
19.	R172096041020	MAC. SCREW HANDLE M4.0*10.0L,NI	1			
18.	172130030620	TAP. SCREW-TF #3.0*6.0L,NI	6			
17.	R170110000200	BASE FOOT (SILICON RUBBER/D16.0*2.0t) (Black)	6	Rubber		
16.	R171201001260	BASE BKT (SECC 1.0T) (SA0&HA0)	1	SECC		
15.	R170105065010	BASE (94-HB/J13417B5XSA0)	1	PA757		
14.	171201020481	BASE NECK BKT(SECC 1.2tXs220HQL)	1	SECC		
13.	R170105036012	BASE NECK(ABS 94-HB/K21411X(G227HQL)	1	PA757		
12.	172050030850	MAC. SCREW-MI M3.0*8.0L,BLK-NI	1			
11.	R171209000730	Hinge Ass'y (SA220)	1	SECC		
10.	R170102056021	REAR COVER(ABS 94-HB/J13417B5XR221Q bmd)	1	PA757		
09.	R033502040230	SPK 2W 4ohm 470/230mm (P2828KMG04E-I-9JB) VECO for R27L LF	1			
08.	R170104017010	DISPLAY KEY(ABS 94-HB/J13417B5XR271)	1	PA757		
07.	R170119035011/5021	Frame_L/R(ABS 94-HB/J13417B5) (R221 Q)	各1	PA757		
06.	R171201001021	SHIELDING (SECC 0.5T)(bmdXR271)	1	SECC		
05.	R352227820150	MAIN BD ASS'Y SA2200 bmd(LM215WF3-RSAR7) ES7/B no ES logo	1			
04.	LM215WF3-RSAR7	ES7.0 LM215WF3-RSAR7 R221,Blade V AD2 215W	1			
03.	R170107002240	LED LENS(PC-122)(R271)	1	PC	TRANSPARENT	
02.	R194718000300	GASKET(L490*W4*0.6)	1	SPONGE		
01.	R170101029010	FRONT DECK(ABS 94-HB/J13417B5XR221 Q)	1	PA757	BLACK	
NO.	PART NO.	DESCRIPTION	QTY	MATERIAL	COLOR FINISH	NOTE

This drawing is property of RAKEN Technology Ltd.  
Unauthorized reproduction in whole or in part is prohibited by law.

## 2. Wiring Connectivity diagram



### 3. Mechanical Instruction

#### Tools Required

List the type and size of the tools that would typically can be used to disassemble the product to a point where components and materials requiring selective treatment can be removed.

#### Tool Description:

- working table
- Screw-driver
- Knife
- glove
- cleaning cloth
- ESD protection

## 4. Assembly and Disassembly Procedures

### ➤ Disassembly Procedure

Step. 1 Pull the base & stand assembly out



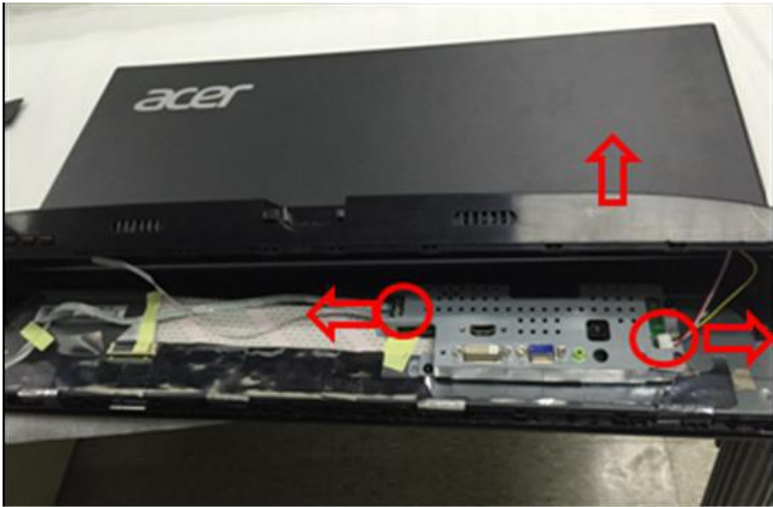
Step.2 Unscrew two screws at the I/O area



Step.3 Disassemble rear cover by a thin plastic tool from a slot at the bottom of rear cover



Step 4. Pull up the rear cover and pull out all connectors



Step.5 Disassemble deco cover.



Step.6 Unscrew PCBA's screws and disassemble frame L&R.

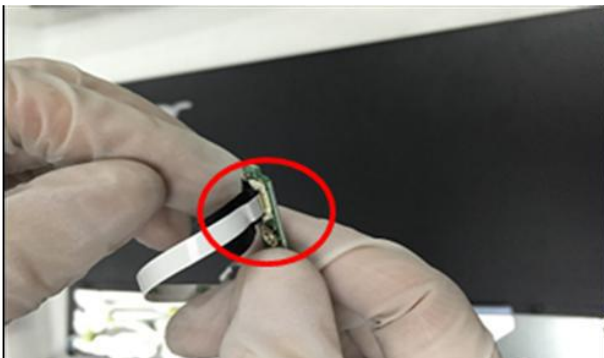




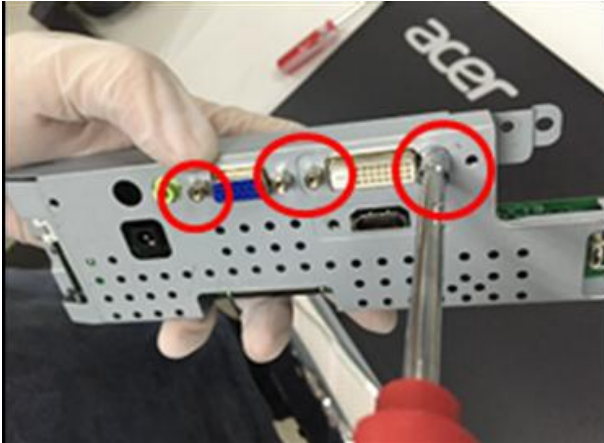
Step.7 Remove all cables from LCM



Step.8 Remove FFC from display board



Step.9 Unscrew hex nuts and six screws and remove main board PCBA from main shielding.



Step.10 Unscrew the screw and separate base & neck assembly



Step.11 Remove six silicon rubbers



Step.12 Unscrew six screws and separate base assembly



Step.13 Unscrew two screws and remove bracket

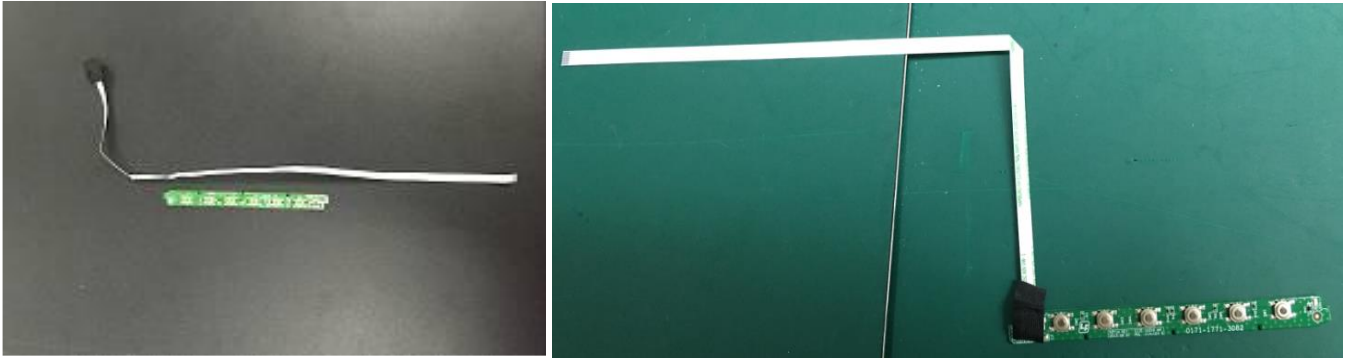


Step.14 Unscrew two screw and separate HINGE assembly



## ➤ Assembly Procedure

Step1. Assembly 8 FFC to key board



Step2. Assembly key board to rear cover



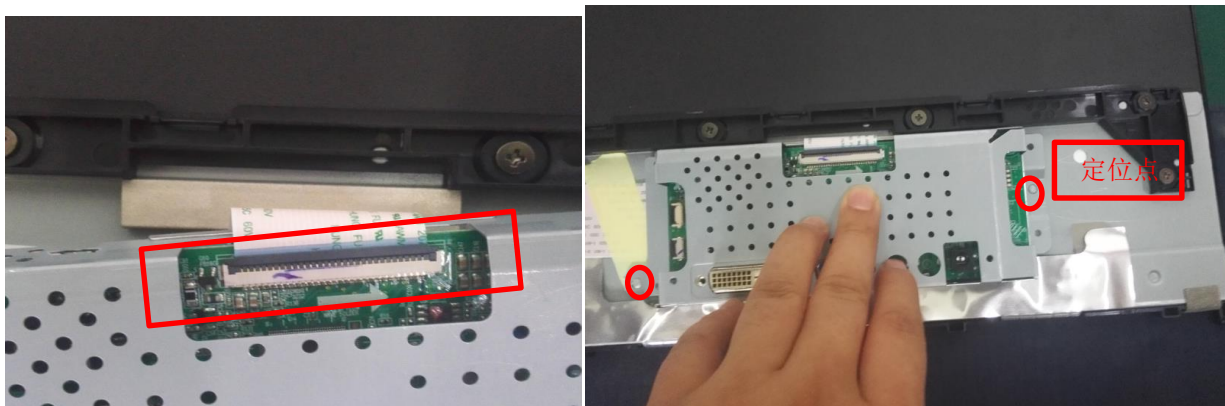
Step3. Assemble deco cover to LCM



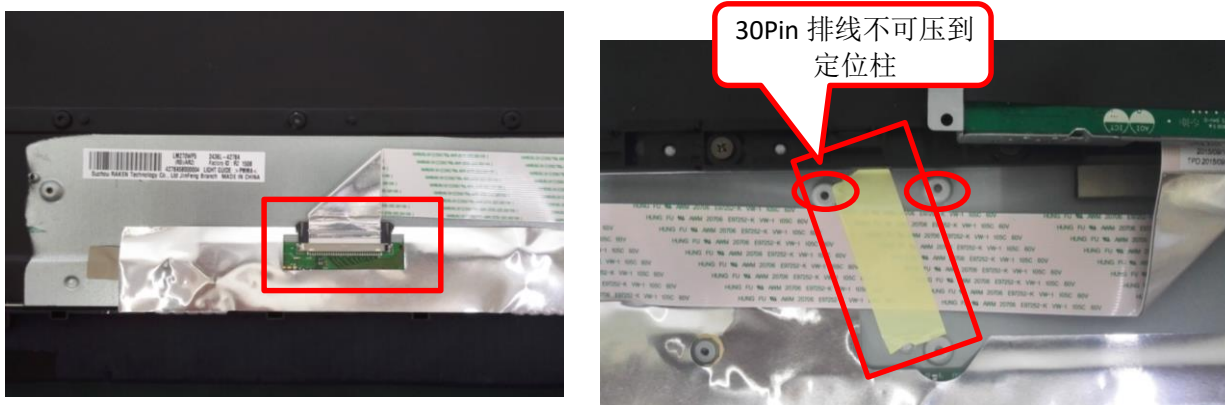
Step4. Assemble frame L&R and lock crews to fix



Step5. Assembly main board into shielding and insert 30pin FFC to MB, put main board on LCM.



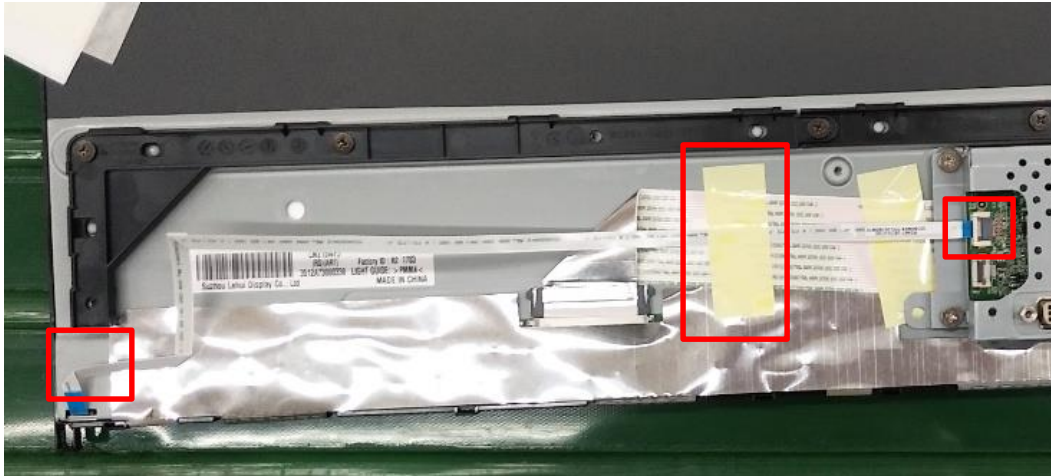
Step6. Insert 30 pin LVDS FFC to LCM, then use yellow tape to tape FFC.



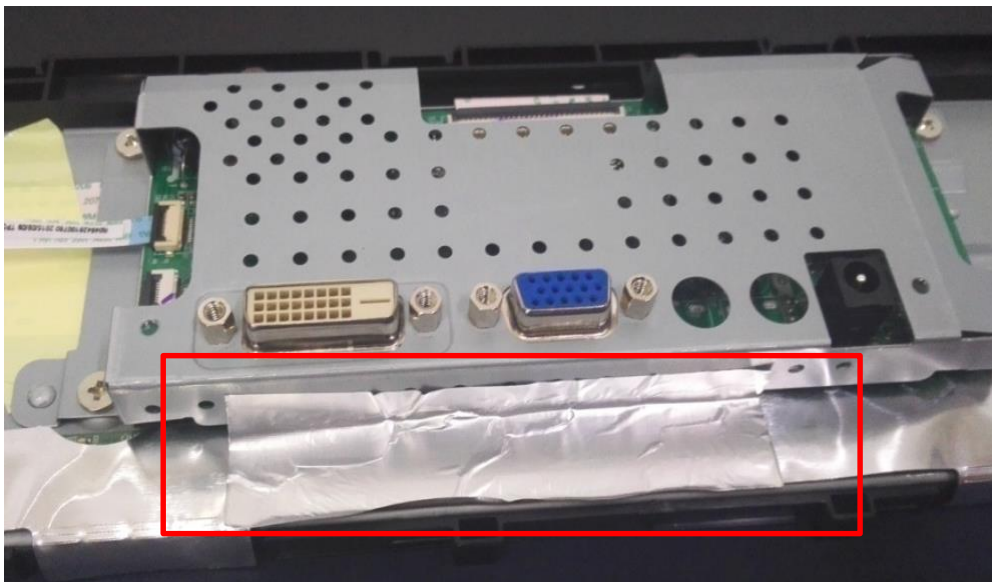
Step7. Lock crews to fix MB



Step8. Insert 10pin FFC to LCM and LCM and inert 30pin FC to panel, then use yellow tape to fix FFC



Step9. Use AI tape the tape shielding and LCM.



Step10. Insert 8pin FFC to MB and assembly rear cover with LCM .

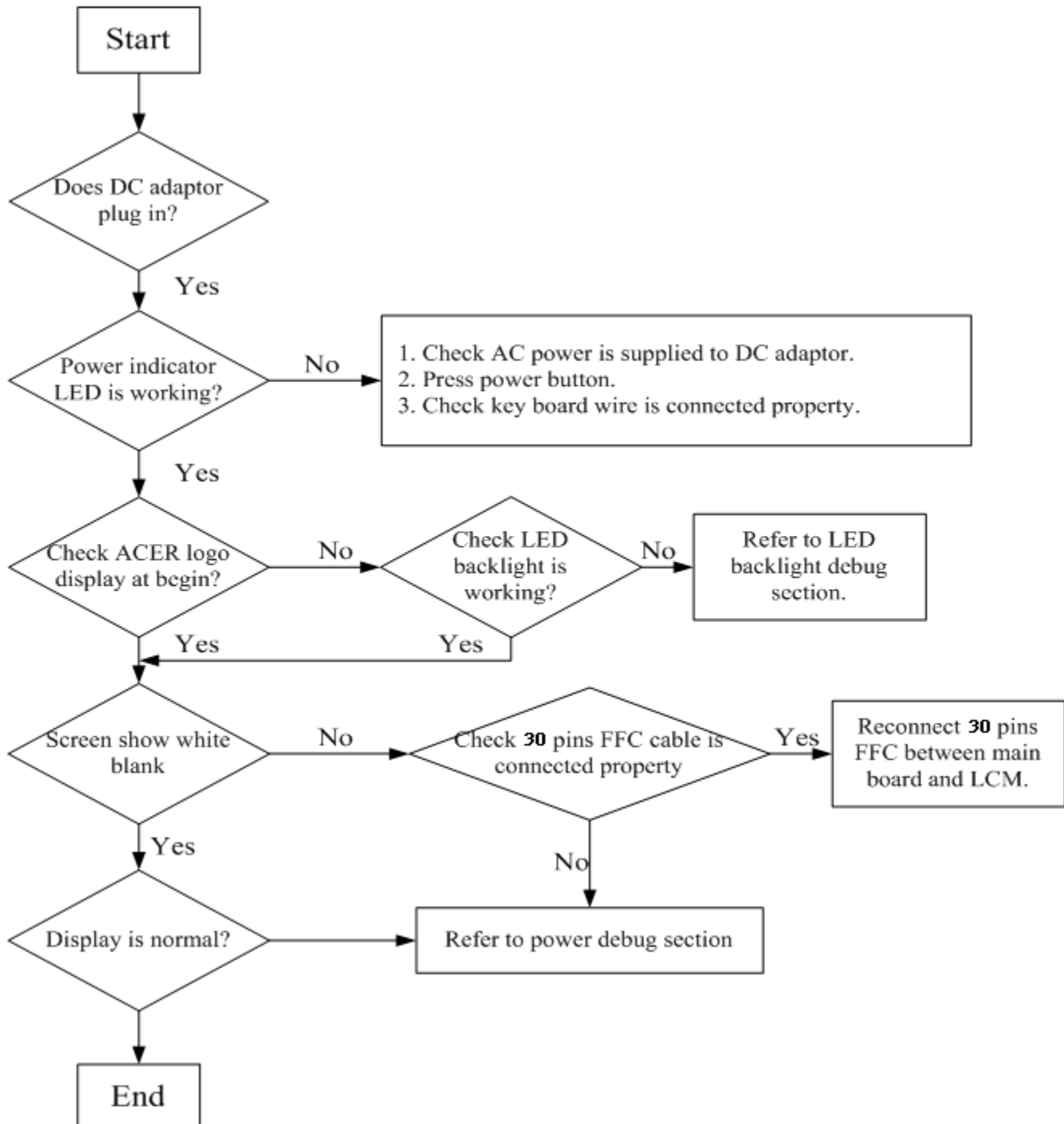


Step11. Lock rear cover screw (in red circle),



## 5. Troubleshooting

### 5.1 Test flow for abnormal machine:

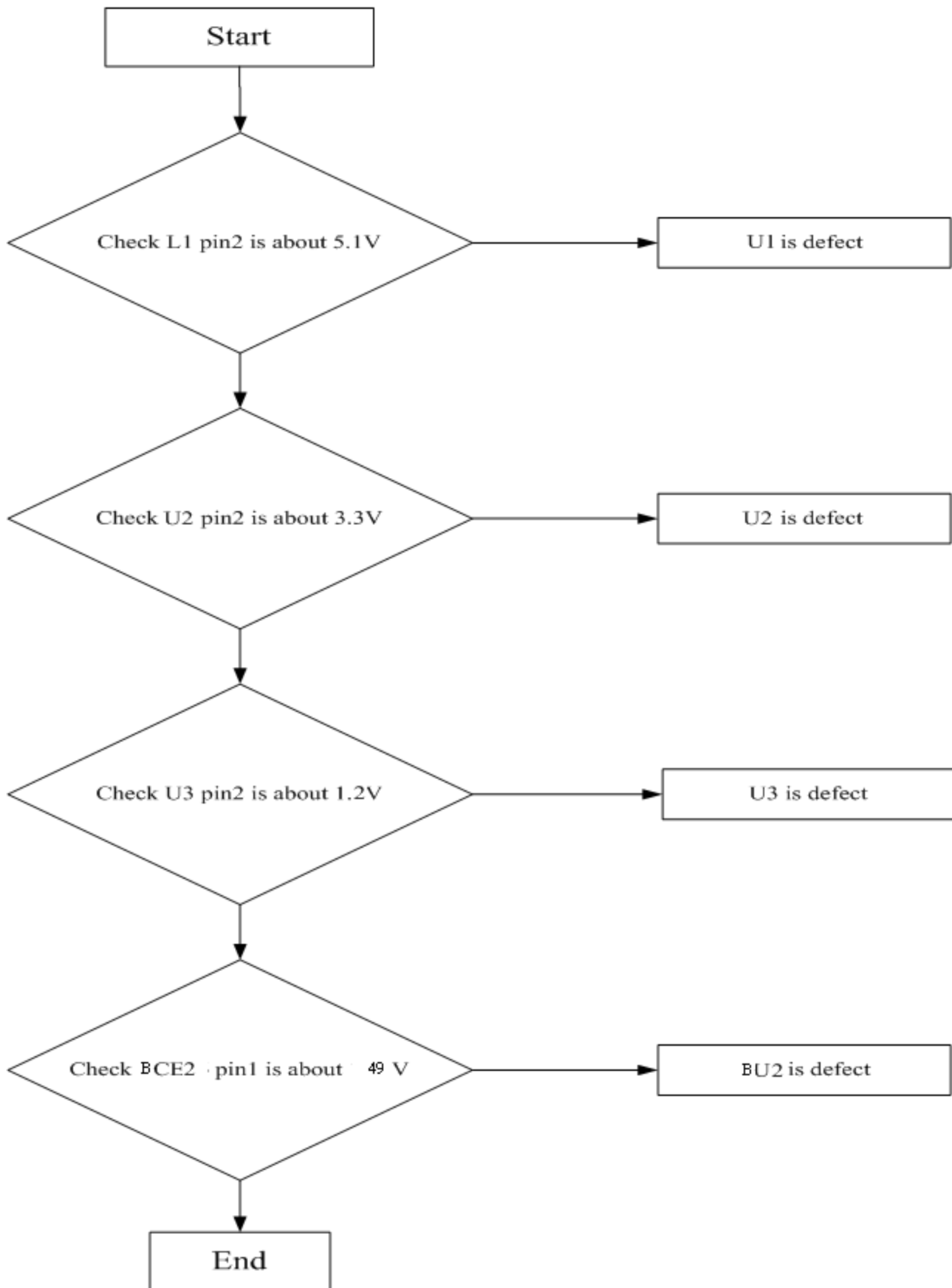











## 5.2 LED backlight debug flow:



5.3 Power debug flow:



## 6. FRU (Field Replaceable Unit) List

Parts Photo	SPL_Category	Acer PN	Raken PN	ODM Description
	ADAPTER	25.T4BM5.001	R030070131495	A-D adapter 1.3 A 19V ADS-25SG-19-3 19025E(VI) _ ACER S200HQL
	BOARD	55.T90M5.006	R352231820150	MAIN BD ASS'Y SA220Q bi_RTD2313AR freesync ES7.0 no ES logo_CI
	BOARD	55.T60M5.002	R352700120156	DISPLAY BD ASS'Y(R271H)(R2)
	CABLE	50.T6KM5.001	R046428080860	WH FFC 8P(0.5mm)235mm(1FOLD)60V G/F (A8+A5)LF
	CABLE	50.T6KM5.003	R046428100800	WH FFC 10P(0.5mm)320mm(3FOLD+PRO)60V G/F (A8+A12/V-CUT)LF
	CABLE	50.T6KM5.005	R046428301551	WH FFC 30P(1.0mm)275mm(2FOLD)60V G/F W/CONN.(A5+BC)+AL(AA) LF
	LCD	KL.21502.011	R352200920395	LCM ASS'Y ACER SB220Q (ES8.0 LM215WF3-RSAR7-001)